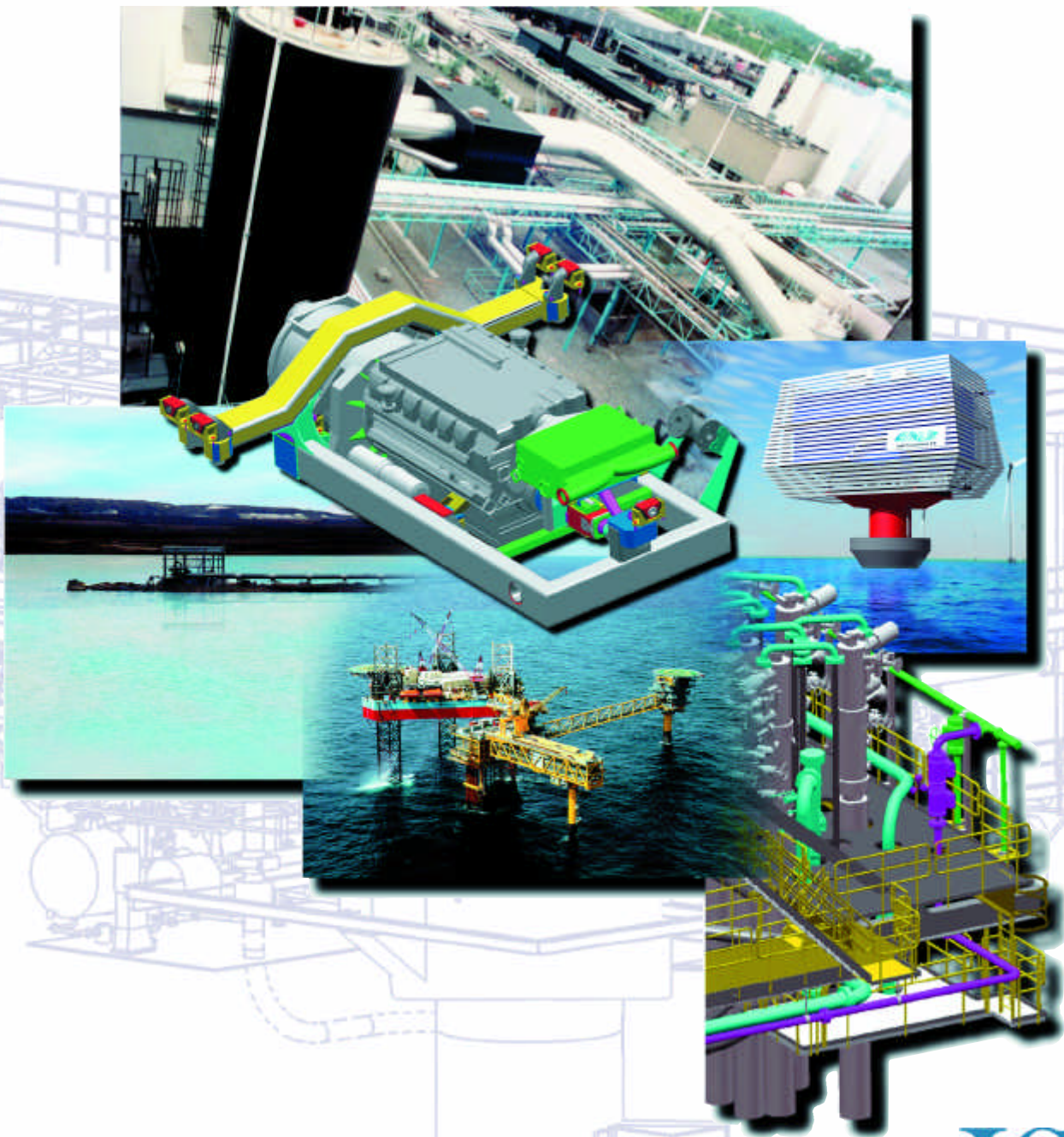


Process

Engineering & Plant Design



Process Engineering & Plant Design

The Company, The Staff and Experience

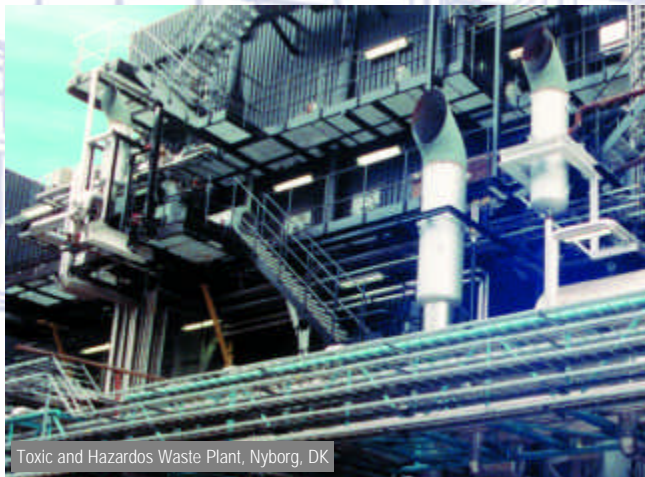
The Company

ISC Consulting Engineers A/S was founded in 1967 by Kjeld Thomsen M.Sc. (Struct. Eng.) former associate Professor at the Technical University of Denmark.

ISC offices in Denmark are located in Copenhagen, Esbjerg, Kalundborg and Viborg.

ISC provides comprehensive independent consulting services within all fields of planning, feasibility studies, civil, structural, mechanical, process and electrical engineering on a worldwide basis.

ISC has a special experience and knowledge in the field of Process Engineering and Plant Design for projects carried out in Denmark and abroad.



The Staff

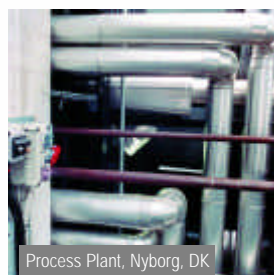
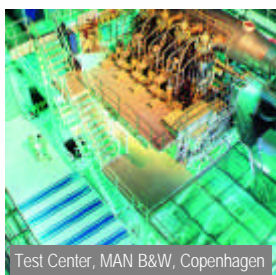
The combined staff of the company comprises 170 employees (year 2002) of which approximate 70 percent are graduates in electrical, mechanical or structural engineering and related disciplines. The company's expertise also covers management, planning, computer application, information systems and maintenance systems.

Furthermore ISC maintains standing agreement of co-operation with individual experts and public scientific institutions, thereby supplementing the company's know-how in connection with assignments requiring multiprofessional teams of specialists outside the company's own staff.

Experience

ISC has worldwide experience gained on projects carried out in more than 55 countries on 5 continents.

The Process and Plant Design assignments have primarily been located in Denmark, Norway, Greenland and the Middle East.



Process Engineering & Plant Design

Scope of Services and Selected References

Scope of Services

Conceptual Phase:

- Feasibility studies
- Cost estimate
- Front end design
- Planning and management

Design Phase:

- Jackets, decks and modules
- Bridges
- Cranes and marine terminals
- Power installations
- Fire fighting systems
- Process installations
- Piping and pump systems
- Construction specifications

Construction Phase:

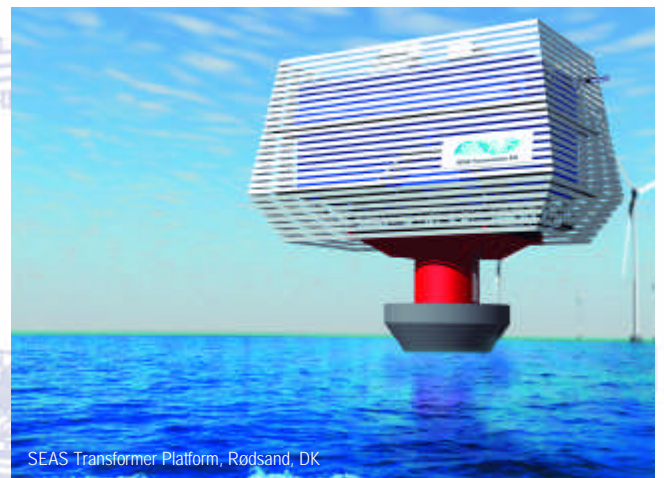
- Commissioning
- Shop drawings
- Supervision on-/offshore
- Quality assurance
- As-built drawings
- Plant start-up

Operation Phase:

- Installation improvements
- Supervision of repair
- Maintenance
- Operation procedures



Water Treatment Plant, Thule Air Base, Greenland



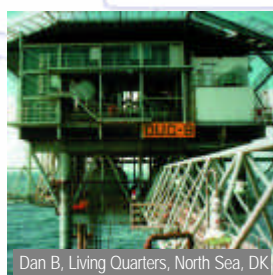
SEAS Transformer Platform, Rødsand, DK

Selected References

- | | | | |
|---------------------------------|----------------------------|------------------------------|-------------------------------|
| ● Dan B, Living Quarters | Mærsk Olie og Gas AS | ● LPG/MEA Project | Statoil Refinery A/S |
| ● Floating Hotel | Elsinore Shipyard | ● Vacuum Distillation Piping | Kuwait Petroleum Refinery A/S |
| ● Skjold A, Topside Facilities | Mærsk Olie og Gas AS | ● Catalyst Plant Piping | Haldor Topsøe A/S |
| ● Gorm C/E, Rolf tie-in on Gorm | Mærsk Olie og Gas AS | ● Fuel Gas Export Project | Statoil Refinery A/S |
| ● Skjold A, Development | Mærsk Olie og Gas AS | ● Process Plant | Grønlandsgarveriet |
| ● Dagmar A, Topside Facilities | Mærsk Olie og Gas AS | ● Incinerator Plant | Ansaldo Vølund A/S |
| ● Kraka A, Topside Facilities | Mærsk Olie og Gas AS | ● Heavy Fuel Testplant | MAN B&W Diesel A/S |
| ● Skjold, Development 1992 | Mærsk Olie og Gas AS | ● Water Treatment Plant | USAF, Thule, Greenland |
| ● Al Shaheen A, Separator Unit | Maersk Oil Qatar AS | ● Airconditioning System | USAF, Thule, Greenland |
| ● Al Shaheen A, Generator Unit | Maersk Oil Qatar AS | ● Fuel Distribution System | USAF, Thule, Greenland |
| ● Incinerator Plant | Vølund Ecology Systems A/S | ● Fuel Distribution System | RDAF, DK |



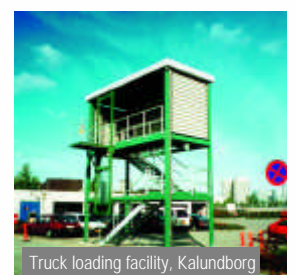
Kraka, New module, North Sea, DK



Dan B, Living Quarters, North Sea, DK



Skjold Development, North Sea, DK



Truck loading facility, Kalundborg

Process Engineering & Plant Design

The ISC Approach and Contact

The ISC Approach

The ISC approach to a given job is guided by the wish to assure that the client's requirements and goals in all aspects are achieved in an expedient manner.

ISC assures that the job is carried out to the specified time schedule, the technical specifications and within the agreed cost.

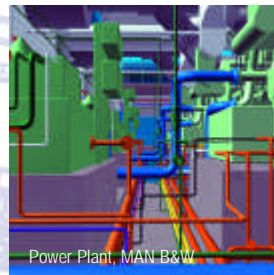
ISC assists the client up front to prepare a complete set of programming data approved by the selected client user groups.

ISC allocates a project manager and project group with professional skills in the various engineering disciplines to carry out the work, which typically includes the following phases:

- Feasibility studies
- Programming data
- Conceptual design and cost estimate
- Authority approval
- Detailed design and tender documents
- Tender and tender evaluation
- Contract management
- Inspection and quality assurance
- Commissioning and hand over to client
- Maintenance and operation procedures

ISC applies up to date advanced computer capabilities and software programs as tools to meet the job targets.

Selection of ISC as your client consultant and partner is an appropriate way to success.



Contact

To learn more about our company and our products and services please contact:

On the web:

www.isc.dk

ISC Consulting Engineers A/S

- 31, Øster Allé
DK-2100 Copenhagen Ø
Tel.: +45 35 27 88 00
Fax: +45 35 27 88 44
E-mail : info@isc.dk
- 1, Farvervej
DK-8800 Viborg
Tel.: +45 87 25 49 70
Fax: +45 87 25 49 71
E-mail : viborg@isc.dk
- 66, Borgergade
DK-6700 Esbjerg
Tel.: +45 75 18 04 00
Fax: +45 75 13 81 44
E-mail : esbjerg@isc.dk
- 1, Strandstræde
DK-4400 Kalundborg
Tel.: +45 59 51 71 91
Fax: +45 59 51 09 10
E-mail : klb@isc.dk



ISC
Quality Engineering Worldwide